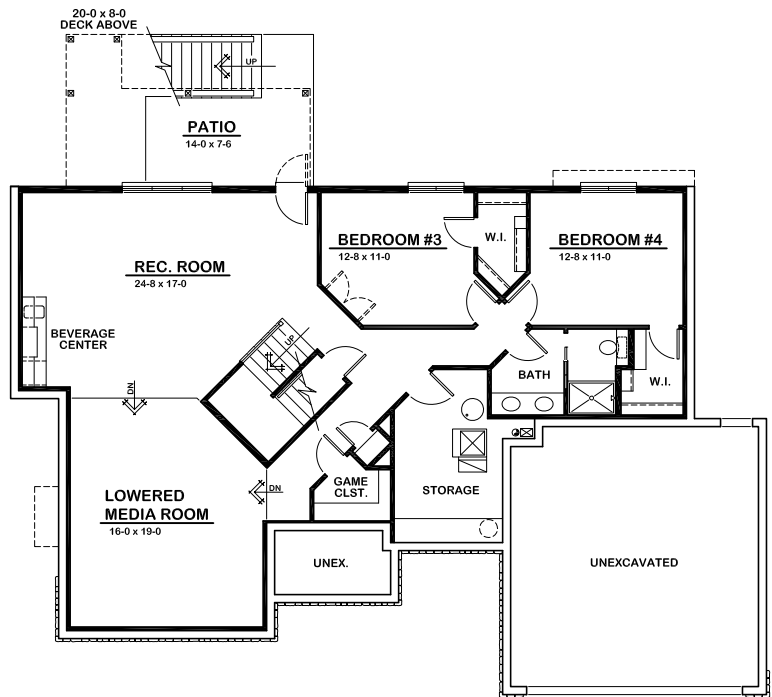
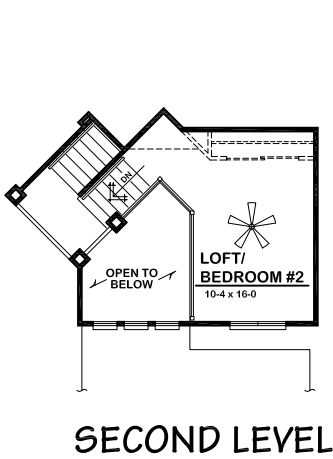


PLAN # 1390

A | I
B | D



MAIN LEVEL	1,654 SQ FT
SECOND LEVEL	225 SQ FT
FINISHED BSMT.	1,427 SQ FT
TOTAL	3,306 SQ FT
GARAGE	485 SQ FT
DECK	233 SQ FT

straightline design, inc.

3925 So. 147th Street • #119
Omaha, NE • 68144
402 • 334 • 6752

Plan #1390 1-1/2 Story

Plan Description

• This house offers a 2-story entry and an angled staircase. • The spacious kitchen with a big curved island and snack bar is open to the great room and serves as the center for entertaining family and friends. • The great room offers a cathedral ceiling and a gas fireplace. It also has an abundance of front facing windows to maximize a great view. • The master bedroom suite includes a master bath with a corner tub, walk-in shower, and large walk-in closet with a built-in dresser. • A loft that can remain open or serve as an additional bedroom or home office. • The optional finished basement includes; 2 bedrooms, 3/4 bath, rec. room with a beverage center and a lowered media room.

General Home Information

Overall Building Size:	63'-0" x 43'-8"	Building Height (A.F.F.):	23'-9"
Stories:	1-1/2	Bathrooms - Main Level:	1, 1/2
Bedrooms - Main Level:	1 w/ Optional 2nd	* Bathrooms - Optional Bsmt.:	3/4
* Bedrooms - Optional Bsmt.:	2	Garage:	2-Car
Foundation:	9'-0" Poured Concrete	Fireplaces:	1
Walk-out:	Yes		

Square Footage

Main Level:	1,654	Garage:	485
Second Level:	225	Deck:	233
Total Finished:	1,879	Patio:	127

* Square Footage - with Optional Finished Basement

Finished Basement:	1,427
Total Finished:	3,306

Roof Information

Roof Style:	Gable/Hip	Roof Pitch:	8/12 F/B, 10/12 Sides
-------------	-----------	-------------	-----------------------

Room Information:

Size

Features

Great Room:	17'-4" x 20'-0"	15'-8" Vaulted Ceiling, Gas Fireplace, Large Front Windows
Kitchen:	12'-4" x 20'-0"	Large Island, Pantry
Eating Area:	11'-8" x 10'-4"	
* Rec. Room:	24'-8" x 17'-0"	Beverage Center
* Media Room:	16'-0" x 19'-0"	Lowered Media Room
Laundry Room:	10'-0" x 7'-8"	
Master Bedroom:	15'-4" x 19'-4"	9'-0" Box Ceiling, Master Bath, Walk-In Closet
Bedroom #2:	10'-4" x 16'-0" (Optional)	
* Bedroom #3:	12'-8" x 11'-0"	Walk-In Closet, Optional French Doors
* Bedroom #4:	12'-8" x 11'-0"	Walk-In Closet
Loft:	10'-4" x 16'-0"	Open to Entry Below, Optional 2nd Bedroom
Garage:	21'-4" x 22'-0"	10'-0" Ceiling
Deck:	20'-0" x 8'-0"	
Patio:	14'-0" x 7'-6"	Concrete Patio