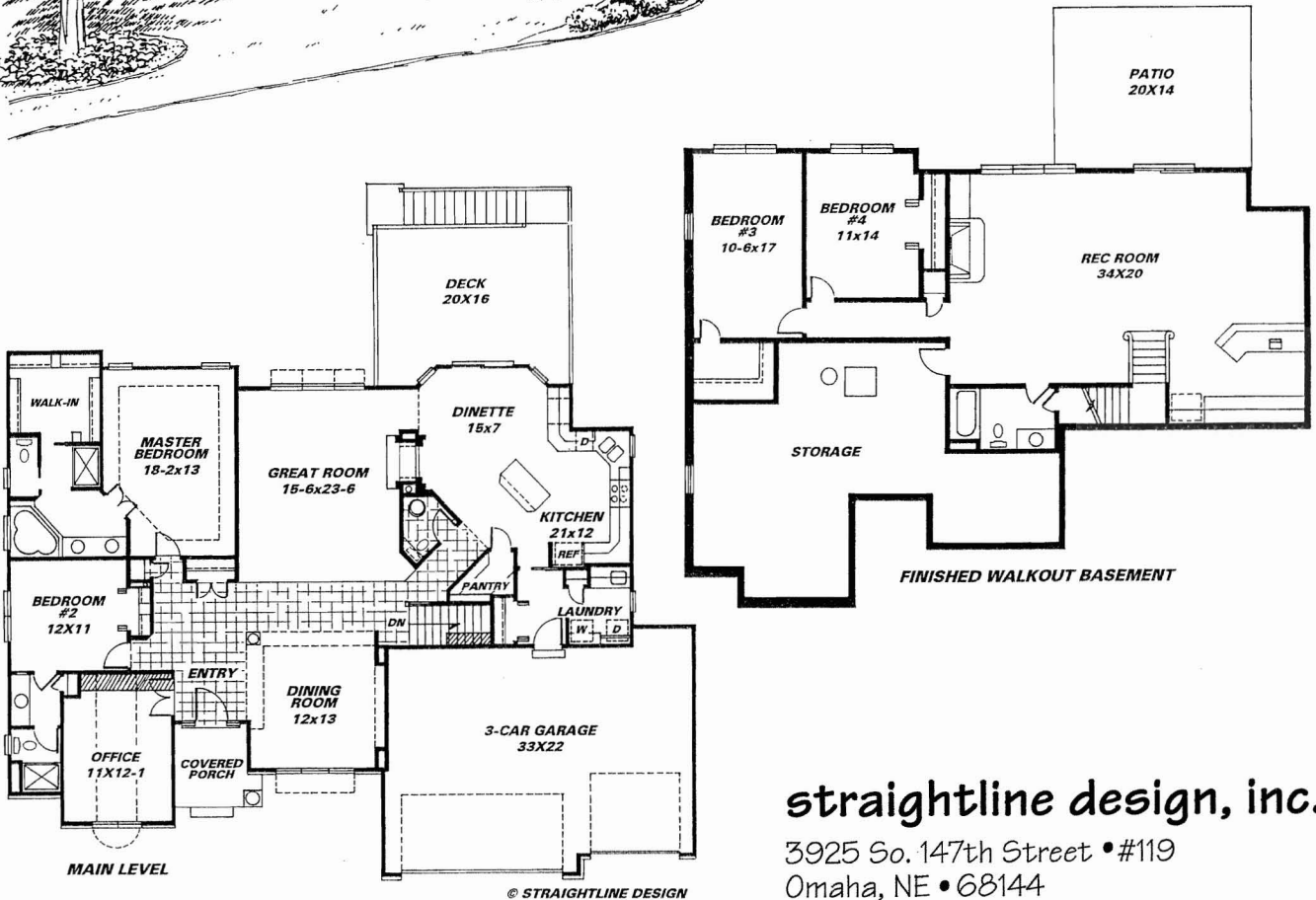


PLAN #0351

A | I
B | D



straightline design, inc.

3925 So. 147th Street • #119

Omaha, NE • 68144

402 • 334 • 6752

MAIN LEVEL	2,149 SQ FT
FINISHED BASEMENT	1,300 SQ FT
TOTAL	3,449 SQ FT

Plan #0351 Ranch

Plan Description

• A classic round column supports the covered front porch of this beautiful brick-faced ranch home. • A tiled center hall entry opens to the adjoining great room and formal dining room and continues to the generous kitchen with its walk-in pantry and dinette that shares a see-through fireplace. • The master suite features an oversized walk-in closet and a luxurious bath. • A front home office and bedroom #2 share a private 3/4 bath. The two rooms could easily be converted into an in-law suite. • Directly located behind the 3– car garage is a laundry room that can be closed off from the kitchen using a pocket door. • The optional walk-out basement includes; 2 large bedrooms, a 3/4 bath, and a large rec. room with a gas fireplace and wet bar.

General Home Information

Overall Building Size:	68'-8" x 52'-8"	Building Height (A.F.F.):	22'-0"
Stories:	1	Bathrooms - Main Level:	1, 3/4, 1/2
Bedrooms - Main Level:	2	* Bathrooms - Optional Bsmt.:	3/4
* Bedrooms - Optional Bsmt.:	2	Garage:	3-Car Garage
Foundation:	9'-4" Conc. Block	Fireplaces - Main Level:	1
Walk-out:	Yes	* Fireplaces - Optional Bsmt.:	1

Square Footage

Main Level:	2,149	Deck:	320
Garage:	703	Patio:	280

* Square Footage - with Optional Finished Basement

Finished Basement:	1,300
Total Finished:	3,449

Roof Information

Roof Style:	Hip/Gable	Roof Pitch:	7/12 F/B, 10/12 Sides
-------------	-----------	-------------	-----------------------

Room Information: Size Features

Great Room:	15'-6" x 23'-6"	10'-0" Ceiling, See-Thru Gas Fireplace
Kitchen:	21'-0" x 12'-0"	Island, Pantry
Dinette:	15'-0" x 7'-0"	See-Thru Gas Fireplace, Built-in Desk
Dining Room:	12'-0" x 13'-0"	10'-0" Ceiling, Hutch Space
Den/Office:	11'-0" x 12'-1"	10'-10" Vaulted Ceiling
* Rec. Room:	34'-0" x 20'-0"	Wet Bar, Gas Fireplace
Laundry Room:	11'-0" x 7'-4"	
Master Bedroom:	18'-2" x 13'-0"	9'-8" Box Ceiling, Full Master Bath, Walk-In Closet
Bedroom #2:	12'-0" x 11'-0"	Bath
* Bedroom #3:	10'-6" x 17'-0"	Walk-In Closet
* Bedroom #4:	11'-0" x 14'-0"	
Garage:	33'-0" x 22'-0"	3-Car Garage
Deck:	20'-0" x 16'-0"	
Patio:	20'-0" x 14'-0"	